

SHOWER SYSTEMS

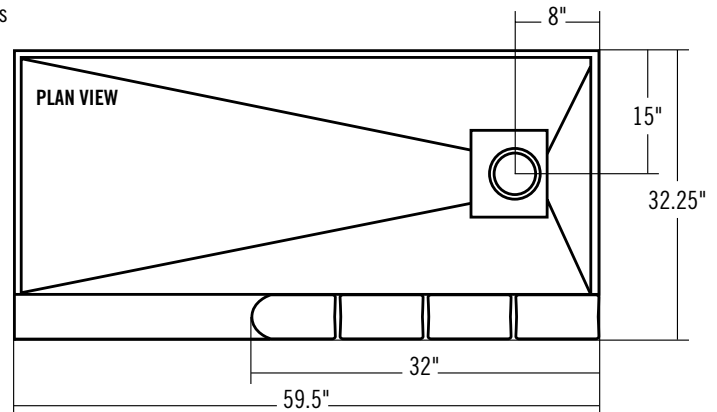
Standard Fit Shower System – ProVantage™ Installation Instructions

MATERIALS LIST

- 1 – Standard Fit Shower Base, 60 inch x 32 inch (specify Left or Right Drain)
- 27 – 8 inch x 8 inch x 4 inch Glass Blocks
- 10 – 8 inch x 8 inch x 4 inch EndBlock™ Finishing Units
- 2 – 8 inch x 8 inch x 4 inch ENCURVE® Finishing Units

- 1 – ProVantage™ Standard Fit Spacer Pack which includes the following:
 - 9 – pcs. 31 inch Horizontal Spacers cut to fit 8 inch x 8 inch x 4 inch EndBlock™ shape
 - 1 – pc. 23 inch Horizontal Spacer cut to fit 8 inch x 8 inch x 4 inch ENCURVE® shape
- 35 – pcs. 7½ inch Vertical Spacers
- 2 – pcs. 7½ inch Vertical Spacers cut to fit 8 inch x 8 inch x 4 inch EndBlock™ shape
- 2 – pcs. 7 inch Vertical Spacers
- 2 – pks. Anchor Packs

- 1 – Bucket ProVantage™ Glass Block Surface Grout
- 6 – Tubes Pittsburgh Corning Glass Block Sealant
- 1 – Chrome Shower Drain
- 1 – Hinged Shower Door
- 1 – Shower Door Installation Kit
- 1 – Bottle Grout Sealer
- 1 – Installation Instructions



STANDARD FIT SHOWER
(Right Drain)

TOOLS REQUIRED

- » Screw driver, power drill with an 1/8 inch and a 3/16 inch drill bit, 3/16 inch masonry drill bit, long nose pliers, rubber mallet, four-foot level, caulk gun, utility knife, margin trowel, rubber float, bucket, tile/grout sponge, rubber gloves, cheese cloth and safety glasses.
- » To set and install the shower base you will also need a mortar pan, mortar mixer hoe, brick trowel, four 2 inch x 4 inch x 6 inch's, wood shims, galvanized nails, 50 lb. bag of plaster or mortar and a sheet of roofing paper or plastic the size of the shower base.

1. SHOWER BASE INSTALLATION INSTRUCTIONS

For Classic Shower Base, Walk-In Shower Base, Neo Angle Shower Base and Standard Fit Shower Base

Special Notes to Installer

- » All pictures provided with these instructions are typical, and may appear different than the actual items being installed.
- » The installer is solely responsible for determining the requirements necessary for compliance with all codes involving installation of this shower.
- » All published unit dimensions are for reference only. Any critical dimensions required for installation should be taken directly from the shower base being installed.
- » Carefully check the shower base upon receipt. Notify your supplier immediately if any questions or problems are encountered during this process. Do not install the base without first addressing questions, which arise during inspection. Check for:
 - » Unit drain matches to the bathroom drain location.
 - » Surface damage.
 - » Color coordination to other bathroom fixtures.

Continued to next page »

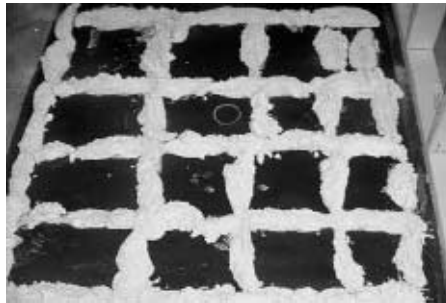
1. SHOWER BASE INSTALLATION INSTRUCTIONS

(Continued)

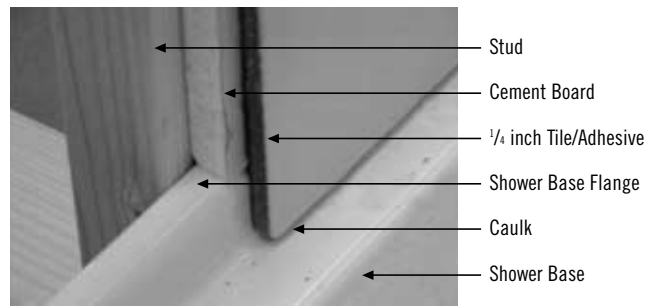


Installation (*Note: Shower base shown in photos may vary from actual style of base being installed.*)

- » Location of drain pipes and shower base drain must be made before the installation of shower base. The drain plug accommodates a 2 inch PVC waste pipe.
- » Insure the floor and stud walls are square and plumb.
- » After leveling base on sub floor (use shims if necessary), draw a line on the studs at the top edge of the shower base flange. This will be the installed height of the shower base.
- » Make certain the drain assembly lines up with drain hole of shower base.



- » Remove shower base and lay down roofing paper or plastic sheet with drain hole mark on it.
- » Mix bedding material (plaster or mortar).
- » Apply bedding material to paper or plastic 2½ inch thick in a 12 inch x 12 inch grid pattern the full length and width of the shower base.
- » Bedding material must not be under the apron (edge).
- » Cut opening in paper at drain and lower shower base into position with drain assembly.
- » It will be necessary to “rock” the shower base until the top of the shower base flange aligns with the lines drawn on the studs.
- » Make certain the apron is contacting the floor along the entire edge of the base. If shims were used re-install them.
- » Insure the base is level in two directions and against the stud framing.
- » Fit drain assembly into shower base. Note: Allow the bedding material to completely harden before applying weight to the bottom of the shower base.



- » Drill 1/8 inch holes through the shower base flange at all stud locations.
- » Secure the base to the studs with 1½ inch roofing nails.
- » Finish installation as shown above.
- » If installing the shower base against an existing wall attach 3/8 inch thick furring strips to walls around the shower base or notch wall to accommodate shower base.

Cleaning Shower Base

- » Use a mild, non-abrasive cleaner specifically formulated for gelcoat and acrylic surfaces. Rinse surface thoroughly.

2. STANDARD FIT SHOWER SYSTEM – PROVANTAGE™ INSTALLATION



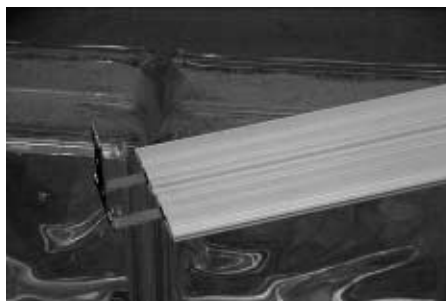
- 2.1 After installation of the shower base, line base with paper or cardboard to protect during installation of glass blocks. Measure 2½ inches in from the inside of the curb and draw a centerline the length of the curb.



- 2.2 On the side of the shower where you intend to install the glass blocks, use a 4-foot level to draw a plumb line on the wall starting at the centerline on the curb and extending 76 inches up the wall. This will be your wall anchor line. On the opposite wall draw a plumb line extending 64 inches up the wall. This will be your centerline for the door.



- 2.3 On the side of the shower where you intend to install the glass blocks, measure 31 inches out from the wall and put a mark on your centerline. Next, draw two more lines parallel to the centerline on the curb 1 inch to each side of the centerline stopping at 31 inches. These will be the guidelines when applying the sealant on the shower base curb.



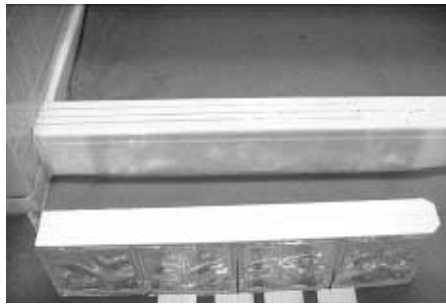
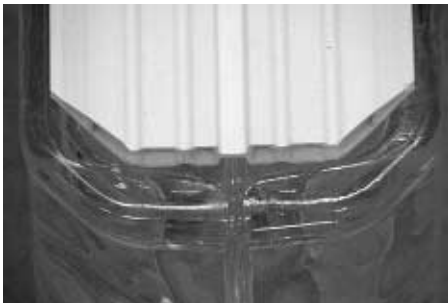
- 2.4 Line up the first course of glass blocks and spacers; three 8 inch x 8 inch x 4 inch glass blocks and one EndBlock™ Finishing Unit, one 31 inch horizontal spacer with one end cut to fit EndBlock™ Finishing Unit, four 7¼ inch vertical spacers, and one wall anchor with wedges and screws. Insert wall anchor into the 31 inch horizontal spacer and temporarily install the horizontal spacer on to curb.

2. STANDARD FIT SHOWER SYSTEM – PROVANTAGE™ INSTALLATION

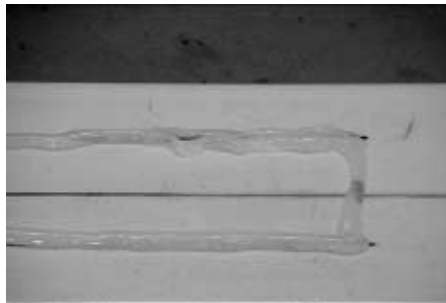
(Continued)



- 2.5 Starting with a vertical spacer install the first course of glass blocks with vertical spacers between the blocks. Use a level to check the alignment of the course of glass blocks. Make certain the blocks are tight against the wall.



- 2.6 If the EndBlock™ Finishing Unit doesn't fit firmly on the horizontal spacer trim the end of the horizontal spacer to fit behind the edge of the unit. Remove the glass blocks and spacers from the curb. Use this horizontal spacer to confirm that all the 31 inch horizontal spacers are trimmed properly. Now let's build the glass block wall.



- 2.7 Apply a 1/4 inch bead of sealant on the sealant guide lines, crossing over at the 31 inch mark. Next, reinstall the horizontal spacer with wall anchor, pressing it down into the sealant. (Do not secure with screws).



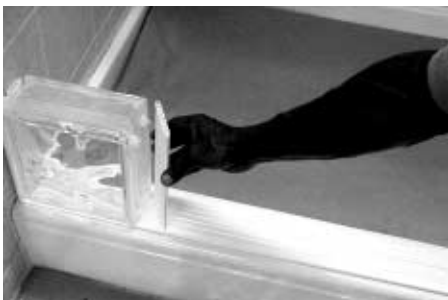
- 2.8 Apply four 1/2 inch dabs of sealant to the first vertical spacer 1/2 inch in from the four corners. Press the spacer into place over the anchor.



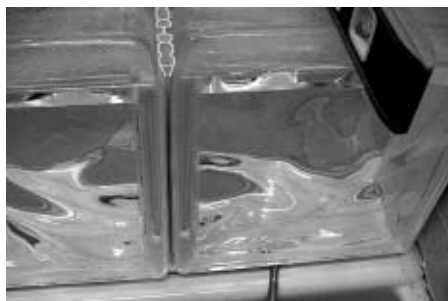
2.9 Apply 4 dabs of sealant to the other side of the first vertical spacer. Next, apply a 1/4 inch bead of sealant to the first row of glass blocks behind the raised edge of the glass block faces on both sides of the blocks, circling the finishing unit.



2.10 Install first glass block on top of the horizontal spacer with the beads of sealant down, push the glass block firmly against the wall and the base. Apply four 1/2 inch dabs of sealant behind the raised edge of the first glass block 1/2 inch in from the four corners.



2.11 Then, press another vertical spacer into place. Apply four 1/2 inch dabs of sealant to the vertical spacer 1/2 inch from the four corners. Install the second glass block.



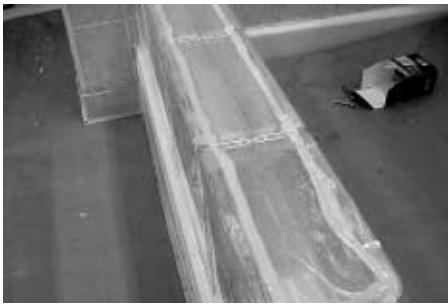
2.12 Repeat these procedures for the first course of glass blocks. Now, that the first course of blocks are installed, you will need to level the glass blocks using the wedges provided with the anchors. Place a level on top of the first glass block; if the glass block is not level, carefully slide the tip of a screw driver (straight tip) under the horizontal spacer until the glass block is level. Next, slide a wedge under the horizontal spacer.

2. STANDARD FIT SHOWER SYSTEM – PROVANTAGE™ INSTALLATION

(Continued)



2.13 Repeat procedures for the center and end of first course. Be sure to slide the wedges between the horizontal spacers and the curb not between the glass block and the horizontal spacer. When the first course is level, apply a 1/4 inch bead of sealant to the top of the installed glass blocks behind the raised edge of the glass block faces on both sides of the blocks, circling the finishing unit.



2.14 Next, insert the anchor into the second horizontal spacer and push the spacer firmly in place. **Always**, check with a level to confirm that the wall is straight, level and plumb as you build.



2.15 Align the V-notch of the wall anchor with the wall anchor line and install two screws (screws are provided with the anchors). Line up the second course of glass blocks and spacers: three 8 inch x 8 inch x 4 inch glass blocks, one EndBlock™ Finishing Unit and four 7 1/2 inch vertical spacers. Next, apply four 1/2 inch dabs of sealant to the first vertical spacer 1/2 inch in from the four corners.



2.16 Press the spacer into place over the anchor and install the second course of glass blocks following the same procedure as for the first course. Repeat for every course until you get to the ninth course. **Remember to check with a level to confirm that the wall is straight, level and plumb as you build.**



2.17 Line up the glass blocks and spacers for the ninth course: three 8 inch x 8 inch x 4 inch glass blocks, one ENCURVE® Finishing Unit, one 31 inch horizontal spacer with one end cut to fit the ENCURVE® Finishing Unit, three 7½ inch vertical spacers, one 7 inch vertical spacer with one end cut to fit the ENCURVE® Finishing Unit, and one wall anchor with screws. Install the horizontal spacer and first three glass blocks (same procedures as before).



2.18 Apply four ½ inch dabs of sealant behind the raised edge of the third glass block ½ inch in from the four corners, then press the **7 inch** shaped vertical spacer into place. Apply four ½ inch dabs of sealant to the vertical spacer ½ inch in from the four corners. Apply sealant to the bottom of ENCURVE® Finishing Unit circling the end.



2.19 Install the ENCURVE® Finishing Unit. Line up the glass blocks and spacers for the tenth and final course: two 8 inch x 8 inch x 4 inch glass blocks, one ENCURVE® Finishing Unit, one 23 inch horizontal spacer with one end cut to fit the finishing unit, two 7 inch vertical spacers, one 7 inch vertical spacer with one end cut to fit the ENCURVE® Finishing Unit, and one wall anchor with screws. Install this course the same as the ninth course.



2.20 Check with a level to confirm that the wall is straight, level and plumb. Once satisfied, let the sealant dry overnight.

3. FINISHING THE JOINTS

Grout Application

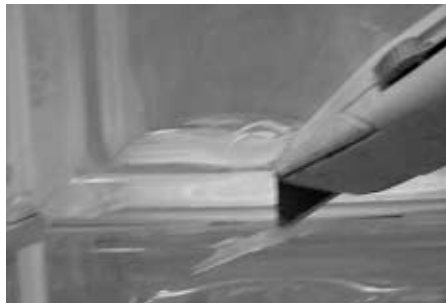
ProVantage™ Glass Block Surface Grout is a high performance white grouting compound designed for interior and exterior applications for use with glass blocks and the ProVantage™ Glass Block Installation System.

IMPORTANT: The ProVantage™ Glass Block Surface Grout was designed and tested for this application – DO NOT SUBSTITUTE!
Caution: Avoid contact with skin. Safety glasses and impervious gloves are recommended to minimize skin and eye contact.

Reminder: Make sure that sealant has been allowed to cure for 24 hours before applying grout. THIS IS A FAST CURE GROUT AND SHOULD BE APPLIED AND COMPLETELY WIPED DOWN WITHIN ONE HOUR. GROUT WILL CURE VERY RAPIDLY AFTER THIS TIME PERIOD.

Tools required: mechanical mixing recommended.

Small power mixer (makes mixing easier, but can also be mixed manually), rubber float, tile/grout sponge, safety glasses, rubber gloves, utility knife, margin trowel and clean bucket.



3.1 Before beginning the application of the grout, inspect the glass block joints and remove any excess sealant from the vertical and horizontal joints with a utility knife.



3.2 **Mixing:** Remove the bag of grout from bucket. Pour in approximately 16 ounces of clean water.



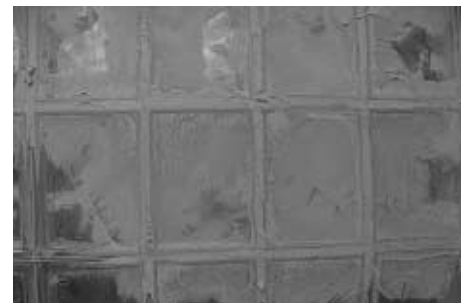
3.3 Gradually add half the bag of ProVantage™ Grout powder while slowly mixing. Use a low-speed mixer. Mix thoroughly to a smooth, homogeneous consistency.



3.4 Allow material to stand (“slake”) for approximately 5 to 10 minutes. Re-mix without adding more water or powder.



3.5 **Begin application of grout:** Starting at the top of the glass block wall, apply grout to the joints of glass blocks by moving the rubber float diagonally on a 45° angle across the joints. This is the best application method to fill the joints with grout. Pack material into joints with float until full. Be careful not to move glass blocks while grouting since wall might still be flexible prior to grout cure.



3.6 **Do not grout the perimeter joints between the blocks and the wall and curb.** These joints must be caulked after the grout has dried for a pliable watertight joint. Drag grout float across surface at a 45-degree angle to pick up excess grout.



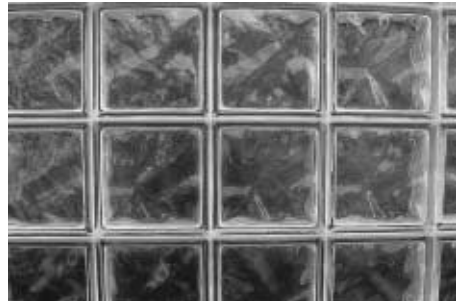
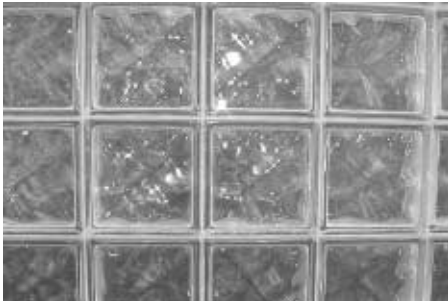
3.7 **IMPORTANT:** Use the margin trowel to thoroughly pack the grout in the joints of the EndBlock™ Finish Units. Apply all the mixed grout before beginning the cleaning process.

3. FINISHING THE JOINTS

(Continued)



- 3.8** Allow grout to firm up in the joints approximately 5 to 10 minutes, and begin cleaning process. Use a clean tile grout sponge and clean, cool water. Dampen sponge and wring out as much water as possible. Excessive water during cleanup will weaken grout. Work sponge diagonally to pick up excess grout on surface of blocks. Run sponge lightly through joints to ensure joints are even.



- 3.9** Wipe down should recur in multiple directions until all grout is removed from blocks and joints are smooth. Rinse and wring out sponge frequently. Let glass block wall set for 15 minutes and wipe down again with a clean bucket of water. The grout will harden within 3 hours. At this point you can begin polishing glass blocks by wiping down with a soft rag or towel. Wait four hours then apply grout sealer to all grout joints. Immediately wipe off any excess sealer with a clean, dry cloth to prevent it from adhering to the glass blocks. For maximum protection it is recommended that you apply a second coat of sealer after the first coat has dried. After 72 hours cure of the grout, caulk all perimeter joints.

4. SHOWER DOOR INSTALLATION

- A. Make certain the additional screws and plastic anchors listed in the Shower Base Bill of Materials for installation of the door are on hand.
- B. Locate the Hinged Shower Door Owner's Manual assembly and installation instructions in the shower door kit.
- C. Follow the Owner's Manual instructions in Step 1. Cut and install the threshold one inch in from the inside of the curb. Step 2 - Install the adjustment rails in the center of the curb using the door centerline previously draw on the wall and the center of the EndBlock™ units. Locate the adjustment rail that matches the magnetic strike jamb; place this rail against the center of the EndBlock™ units, use level to plumb. Measure up from the threshold to the center of the first grout joint. Mark this location on the center of the adjustment rail that matches the magnetic strike jamb. Repeat for the third, sixth and eighth grout joints. Drill a $\frac{3}{16}$ inch diameter hole through the adjustment rail at each mark, making certain the holes are in line up with the grout joints. Next, use a $\frac{3}{16}$ inch diameter masonry bit to drill holes into each grout joint. Insert plastic screw anchor in each hole. Continue with the instructions until Step 5. Mount the magnetic jamb to the adjustment rail using four #8 x 1½ inch flat head screws. **(Do not use power screw gun.)**

IMPORTANT NOTE: After completing the installation, mask off the area around the pivot jamb and magnetic jamb ¼ inch away. Apply heavy bead of glass block sealant to both jambs. Strike the joints and remove the masking tape.

5. ACRYLIC SHOWER BASE CARE & CLEANING INSTRUCTIONS

The Lucite® cast acrylic surface of all Pittsburgh Corning Shower Bases is among the glossiest, highest quality surfaces available. Its hard, non-porous surface prevents dirt from accumulating and resists stains better than other materials. With normal use, Lucite cast acrylic will retain its beauty with only a minimal amount of care. To maintain the high gloss, elegant look of the Lucite cast acrylic surface, follow these simple steps:

1. Use common household, non-abrasive cleaners for most cleaning jobs, (for example: Lysol Basin, Tub & Tile Cleaner®; Glass Plus®; Simple Green®; Mr. Clean; and Top Job, or a mild dishwashing detergent such as Ivory® Liquid). Follow manufacturers' directions and precautions. Rinse well and dry with a clean cloth.
2. Never use abrasive cleaners.
3. Do not allow your Lucite® cast acrylic surface to come into contact with products such as acetone (nail polish remover), nail polish, dry cleaning solution, lacquer thinners, gasoline, pine oil, winter green, etc.
4. Remove dust and dry dirt with a soft, damp cloth.
5. Clean grease, oil, paint or ink stains with isopropyl (rubbing) alcohol. Dry with a clean, soft cloth.
6. Avoid using razor blades or other sharp objects that might scratch the surface. Small scratches can be removed by applying a thin coat of automotive paste wax and buffing lightly with a clean cloth. For deeper scratches, sand the surface lightly with a 400 grit "wet or dry" paper and buff with a fine-grit buffing compound.

6. IF YOU NEED ASSISTANCE

We hope these instructions are clear and answer your questions about the installation of the Pittsburgh Corning Glass Block Shower Systems. For additional information on Pittsburgh Corning Glass Block visit our website at www.pittsburghcorning.com. For specific questions regarding the installation of the Pittsburgh Corning Glass Block Shower System call Technical Support at 1-800-871-9918.

The information contained herein is accurate and reliable to the best of our knowledge. But, because Pittsburgh Corning has no control over installation, workmanship, accessory materials, or conditions of application NO REPRESENTATION OR WARRANTY, EXPRESSED OR IMPLIED, EITHER AS TO MERCHANTABILITY OR FITNESS FOR A PARTICULAR PURPOSE, IS MADE as to the performance or results of an installation containing the products which extends beyond the description on the face hereof and ANY AND ALL LIABILITY FOR NEGLIGENCE, STRICT LIABILITY OR ANY OTHER THEORY OF TORT LIABILITY IS EXPRESSLY DISCLAIMED.

If the products otherwise fail to conform to the representations made herein, through no fault of the buyer, buyer's exclusive remedy at Pittsburgh Corning's option, is the repair or replacement, of the nonconforming products or return of the purchase price paid by purchaser. If replacement is elected, Pittsburgh Corning will not be responsible for installation or labor costs. In no event shall Pittsburgh Corning be responsible or liable for any incidental, special, consequential or punitive damages which might result from product failure, regardless of the theory of liability upon which any such damages are claimed.

Pittsburgh Corning Corporation provides written warranties for many of its products, and such warranties take precedence over the statements contained herein. You may obtain a copy of the warranty for this product by contacting Pittsburgh Corning.



800 Presque Isle Drive
Pittsburgh, PA 15239-2799
TEL: 800-624-2120
FAX: 724-325-9704

www.pittsburghcorning.com

© 2005 Pittsburgh Corning Corporation

All trademarks used in this publication are the property of Pittsburgh Corning Corporation.

GB-300 1M 7/05